

Thermography Inspection Report

Operator	
Location	conservatory
Equipment	

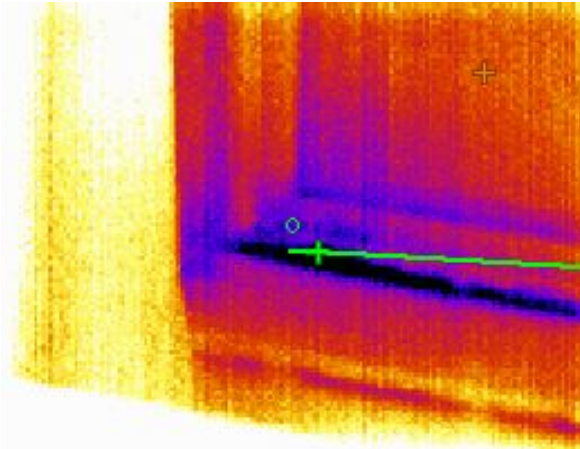
Snapshot

Date	12th December 2008
Time	3.32 PM

Comment

all windows in the conservatory when tested for air tightness using the blower door test showed significant signs of air penetration occurring under the frames and between sashes and frame when smoke tested, also the reveals indicate poor or missing insulation when thermally imaged.

Thermal Snapshot



Visual Image



Temperature Measurements

Cursor 1	3.6 °C
Cursor 2	7.7 °C
Difference	-4.1 °C

Measurement Parameters

Emissivity	0.95
Reflected Temp.	13.0 °C
Measured Load	
Rated Load	
Load %	

Fault / Recommended Action

all windows need to be sealed under frame between cill and and frame and all sashes need to be checked and adjusted.

Repair Action

Action	Date	Initials
Inspected	12th Dec 08	
Repaired		
Reinspected		

Repair Priority 1 Low to 5 High

4
